

NEWMAR | 2015 VENTANA LE & VENTANA



2015

# VENTANA LE & VENTANA

DIESEL MOTOR COACH



WHEN YOU KNOW THE DIFFERENCE <sup>SM</sup>

---

## CLIMB ABOARD YOUR NEXT ADVENTURE

WHEN THE ROAD BECKONS, answer the call in style with the Ventana LE from Newmar. You'll enjoy the unsurpassed power of a 340HP Cummins® ISB diesel coach, wrapped in the amenities and residential touches that make Newmar a legendary name in quality for distinctive travelers. Newmar's exclusive Comfort Drive™ Steering leads the parade of conveniences,

joined by the velvet ride of a Freightliner® Custom Chassis. Heads will turn thanks to an all-new exterior treatment that adds frameless single pane windows for an aerodynamic assist and Newmar's Full-Paint Masterpiece™ Finish for peerless protection. When your itinerary includes equal measures of style and comfort, Ventana LE paves the way for a most pleasant journey.



Comfort Drive™  
STEERING





2015  
**VENTANA LE**

DIESEL MOTOR COACH



MONTAGE DÉCOR STYLE AND SIENNA MAPLE CABINETS - FLOORPLAN 3812

---

## STYLING THAT FITS LIKE A GLOVE

Enter the 2015 Ventana LE and you're suddenly in a world of space and beauty. All-new 12" x 24" luxury vinyl tile and redesigned carpet styling offer a boldly different look, while plush furniture delivers an invitation to stay and relax.

The adjoining kitchen is equally welcoming, boasting an hardwood dinette that seats four, plus polished solid surface counters, a striking textured metallic backsplash and residential quality appliances throughout.





Retire to the rear of Ventana LE and you'll find yourself in a bedroom suite combining restfulness with remarkable amenities. The king size bed features a hardwood framed faux leather headboard complemented by a striking bedspread design.

Storage from carefully crafted overhead cabinetry and a full wardrobe puts everything in its place. And the room comes to life night or day with a 32" LED TV system, now with the added advantage of Blu-Ray DVD for entertainment that's truly picture-perfect.

---

## PREPARE TO BE PAMPERED

Adjoining the Ventana LE's sleeping quarters is a full master bathroom that's as tasteful and contemporary as any home version. The highlight is a striking vessel sink in the half bath, an elegant way to make the most of your vanity space.

Other distinctive touches include a convenient glass-door shower enclosure, even more ample storage, and Newmar's exclusive pivot-design entry door for easy, space-saving bathroom access.

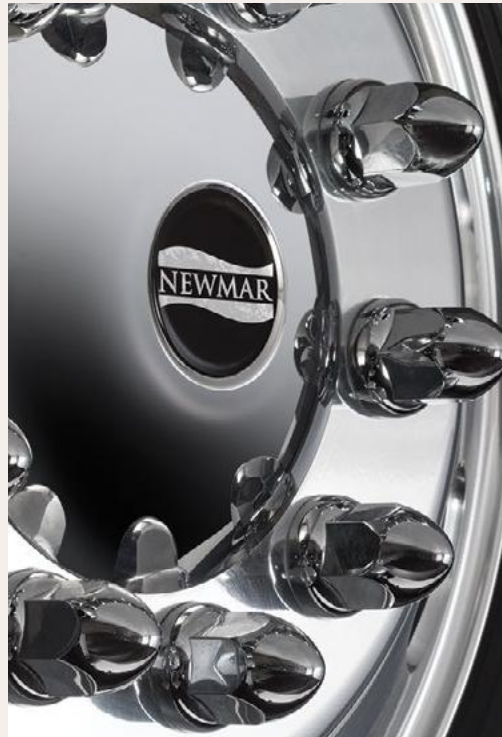
- LED TV in living and bedroom areas with Blu-Ray DVD player
- Luxury vinyl tile floor in kitchen, bathroom and living area
- Shower with glass door
- Newmar-designed pivot-ease half-bath door





VERANDA EXTERIOR - FLOORPLAN 3812





---

## POWERFUL EXTRAS, NOW STANDARD

Power side awnings, power entry door awnings and slide-out awnings from Carefree of Colorado are now standard on Ventana LE. Those extras—along with Newmar touches like streamlined frameless windows and new chrome exterior accents—make Ventana LE the complete package.

- Full-Paint Masterpiece™ Finish with front protective film
- Comfort Drive™ steering with adjustable control
- Freightliner® Custom Chassis with 340HP Cummins ISB Engine
- 6.0 kW Cummins Onan® Diesel Quiet Series Generator





VERANDA EXTERIOR



MONTAGE INTERIOR



TERRACE INTERIOR

### WOOD OPTIONS



COLLAGE EXTERIOR



BISQUE  
GLAZED MAPLE

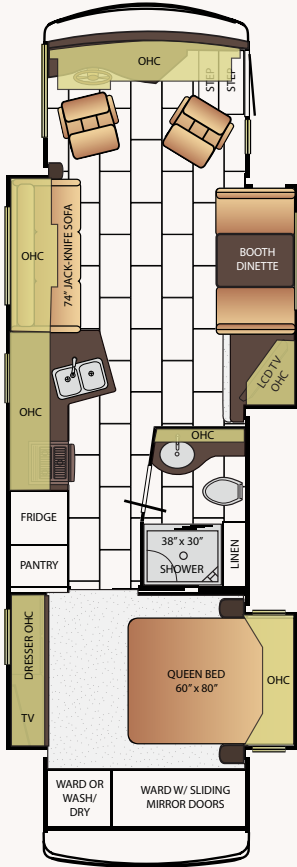


SIENNA  
GLAZED MAPLE



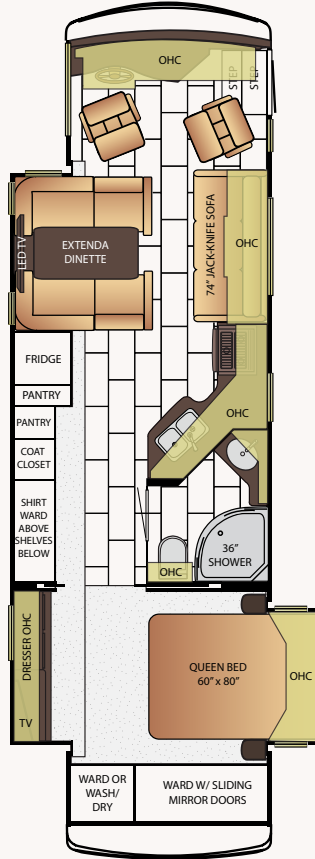
EMPIRE  
GLAZED MAPLE

# VENTANA LE FLOOR PLANS



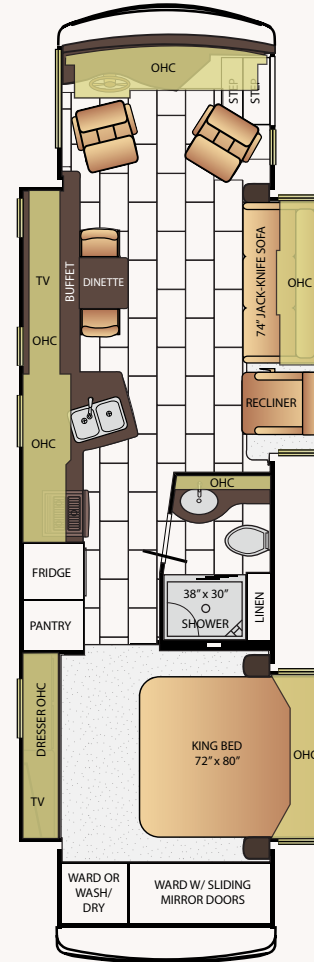
## 3436

App. Overall Length	34'10"
Width	101.5"
App. Overall Height	12'8"
Interior Width	95.5"
Interior Height	84"
Grey Tank	65 gal.
Sewage Tank	45 gal.
Water Tank	105 gal.
Propane Tank	32 gal.
Furnace	35,000 btu



## 3437

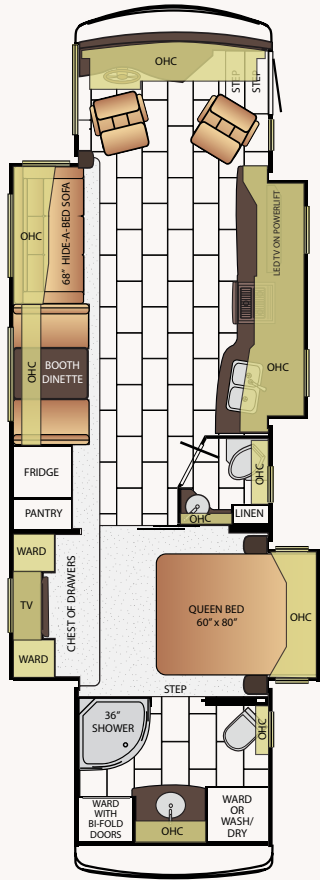
App. Overall Length	34'10"
Width	101.5"
App. Overall Height	12'8"
Interior Width	95.5"
Interior Height	84"
Grey Tank	65 gal.
Sewage Tank	45 gal.
Water Tank	105 gal.
Propane Tank	32 gal.
Furnace	35,000 btu



## 3635

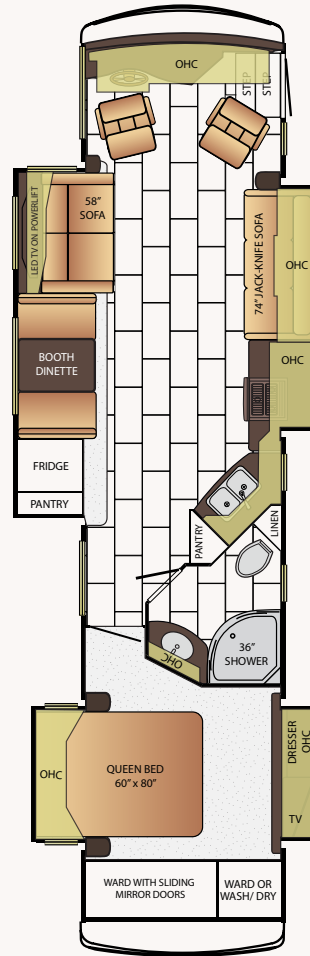
App. Overall Length	36'08"
Width	101.5"
App. Overall Height	12'8"
Interior Width	95.5"
Interior Height	84"
Grey Tank	65 gal.
Sewage Tank	45 gal.
Water Tank	105 gal.
Propane Tank	32 gal.
Furnace	35,000 btu

# VENTANA LE FLOOR PLANS



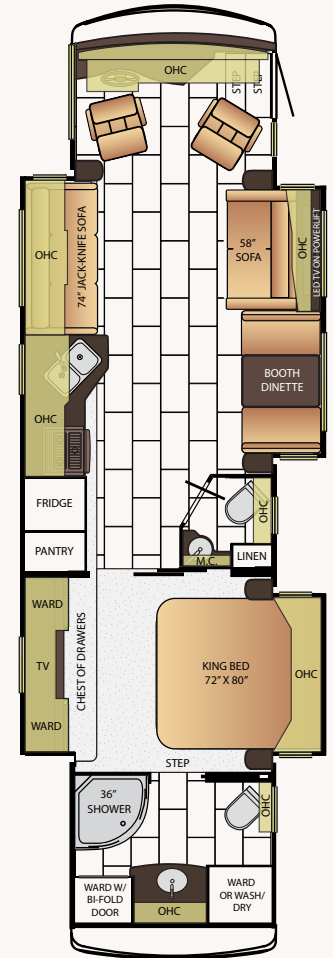
## 3636

App. Overall Length	36'8"
Width	101.5"
App. Overall Height	12'8"
Interior Width	95.5"
Interior Height	84"
Grey Tank	65 gal.
Sewage Tank	45 gal.
Water Tank	105 gal.
Propane Tank	32 gal.
Furnace	54,000 btu



## 3802

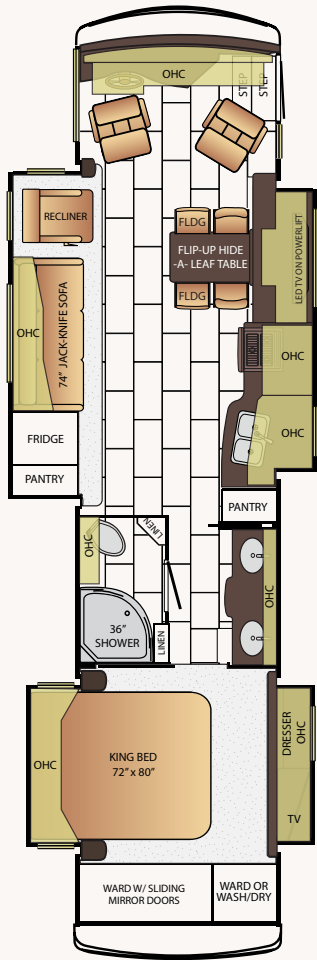
App. Overall Length	38'8"
Width	101.5"
App. Overall Height	12'8"
Interior Width	95.5"
Interior Height	84"
Grey Tank	65 gal.
Sewage Tank	45 gal.
Water Tank	105 gal.
Propane Tank	32 gal.
Furnace	54,000 btu



# VENTANA LE FLOOR PLANS

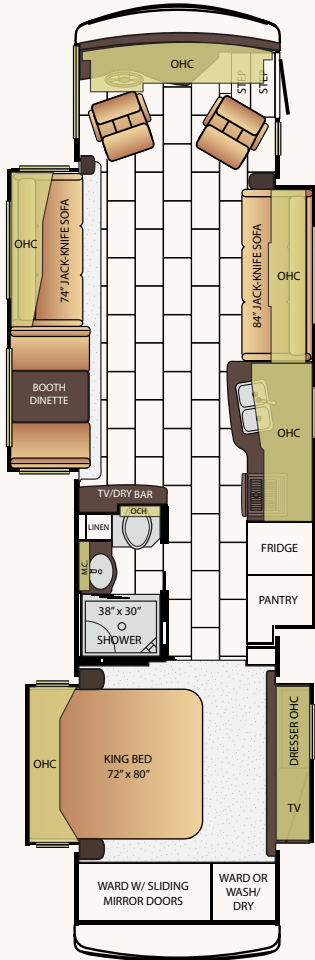
## 3812

App. Overall Length	38'8"
Width	101.5"
App. Overall Height	12'8"
Interior Width	95.5"
Interior Height	84"
Grey Tank	65 gal.
Sewage Tank	45 gal.
Water Tank	105 gal.
Propane Tank	32 gal.
Furnace	54,000 btu



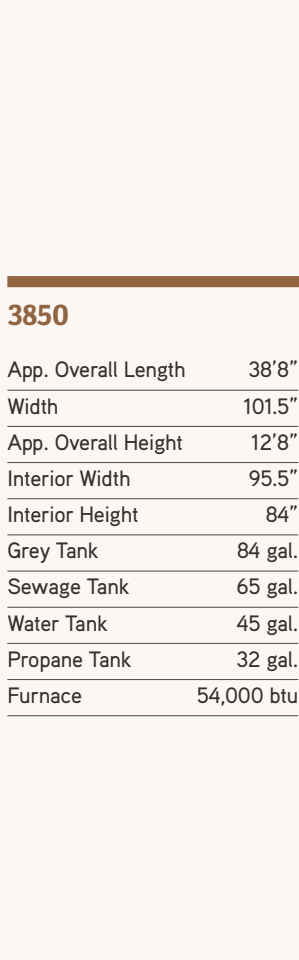
## 3849

App. Overall Length	38'8"
Width	101.5"
App. Overall Height	12'8"
Interior Width	95.5"
Interior Height	84"
Grey Tank	65 gal.
Sewage Tank	45 gal.
Water Tank	105 gal.
Propane Tank	32 gal.
Furnace	54,000 btu



## 3850

App. Overall Length	38'8"
Width	101.5"
App. Overall Height	12'8"
Interior Width	95.5"
Interior Height	84"
Grey Tank	84 gal.
Sewage Tank	65 gal.
Water Tank	45 gal.
Propane Tank	32 gal.
Furnace	54,000 btu





LIKE A FINE HOME, Ventana is framed 16 inches on center, allowing the best placement of outlets, switches and other components. Newmar uses only Sikaflex elastic adhesive throughout Ventana’s construction – one of the strongest bonding agents available. It seals against air and water and helps

dampen sound and vibration. Electrical wiring holes in Ventana’s aluminum frame are ringed with plastic grommets to protect wires from chafing. And Newmar’s Total Comfort™ Central Air is two separate, fully ducted systems that distribute cool air and remove warm air.

**ROOF R-VALUE = 19**

- a. BriteTEK™ Roof (optional one-piece fiberglass roof)
- b. 9mm Wood Decking
- c. Fiberglass Batten Insulation
- d. A/C Ducting
- e. Aluminum Roof Truss
- f. Kraft Paper Vapor Barrier
- g. 5/8" Bead Foam
- h. 3/16" Panel
- i. Padded Vinyl Overlay

**SIDEWALL R-VALUE = 11**

- j. 3/16" Plywood Interior Wall
- k. 5/8" Bead Foam
- l. Kraft Paper Vapor Barrier
- m. Fiberglass Batten Insulation
- n. 3/16" Plywood Exterior Wall
- o. Composite One-Piece Gel Coat Exterior Sidewall
- p. 16" On Center Aluminum Framing with 3 1/2" Header

**FLOOR R-VALUE = 16**

- q. Carpet/Tile
- r. Carpet Padding
- s. 5/8" Floor Decking
- t. Fiberglass Batten Insulation
- u. 2" x 3" Wood Framing
- v. Polyethylene Moisture Barrier
- w. Foam Panels for Noise Protection
- x. Aluminum Ducting

**BASEMENT R-VALUE = 4**

- y. Cargo Liner
- z. 3/8" Floor Decking
- aa. 3/16" Luan Panel
- bb. 1 1/2" Bead Foam
- cc. Aluminum Sheeting (Prevents Distortion)
- 1. 135M Penguin™ Heat Pump Central Air Conditioners (2)
- 2. One-Piece Windshield
- 3. Coated Aluminum Wheels
- 4. Double-Pane Tinted Safety Glass Windows
- 5. Side-Hinged Baggage Doors w/Optional Pullout Tray

## VENTANA LE CHASSIS SPECIFICATIONS

Floor Plan	Engine HP	Axle Ratio	Fuel Cap.	Wheel Base	Front GAWR*	Rear GAWR*	Tag GAWR*	GVWR*	GCWR*	App. UVW	App. NCC
3436	340	4.78	100 gal.	206"	12,000 lb.	20,000 lb.	0	31,000 lb.	33,000 lb.	25,600 lb.	5,400 lb.
3437	340	4.78	100 gal.	206"	12,000 lb.	20,000 lb.	0	31,000 lb.	33,000 lb.	25,600 lb.	5,400 lb.
3635	340	4.78	100 gal.	228"	12,000 lb.	20,000 lb.	0	31,000 lb.	33,000 lb.	25,300 lb.	5,700 lb.
3636	340	4.78	100 gal.	228"	12,000 lb.	20,000 lb.	0	31,000 lb.	33,000 lb.	25,300 lb.	5,700 lb.
3802	340	4.78	100 gal.	252"	12,000 lb.	20,000 lb.	0	31,000 lb.	33,000 lb.	26,100 lb.	4,900 lb.
3812	340	4.78	100 gal.	252"	12,000 lb.	20,000 lb.	0	31,000 lb.	33,000 lb.	26,100 lb.	4,900 lb.
3849	340	4.78	100 gal.	252"	12,000 lb.	20,000 lb.	0	31,000 lb.	33,000 lb.	26,100 lb.	4,900 lb.
3850	340	4.78	100 gal.	252"	12,000 lb.	20,000 lb.	0	31,000 lb.	33,000 lb.	26,100 lb.	4,900 lb.

Lengths, heights, widths and dry weights are approximate. Weight will vary based on optional equipment added to the above base weight.

**GAWR:** Gross Axle Weight Rating is the maximum permissible weight for an axle.

**GVWR:** Gross Vehicle Weight Rating is the maximum permissible weight for a fully loaded motor coach.

**GCWR:** Gross Combination Weight Rating is the value specified by the manufacturer of the vehicle as the maximum allowable loaded weight of this motor coach and any towed trailer or towed vehicle.

**UVW:** Unloaded Vehicle Weight is the weight of this motor coach as built at the factory with full fuel, engine oil and coolants. The UVW does not include cargo, fresh water, propane gas or dealer-installed accessories.

**NCC:** Net Carrying Capacity is the maximum weight of all occupants, including the driver, personal belongings, food, fresh water, waste water, propane gas, tools, tongue weight of towed vehicle, dealer-installed accessories, etc., that can be carried by the motor coach.

\*Specifications supplied by the chassis manufacturer.

# VENTANA LE FEATURES & OPTIONS



## Chassis Features

*Built specifically for Newmar with the highest quality in handling, safety, performance and dependability.*

Freightliner® XCR Chassis with 340Hp Cummins ISB Engine

Chrome Wheel Simulators

Hydraulic Leveling Jacks

Comfort Drive Steering System with Power Column and Adjustable Control

Cruise Control

Manual Tilt and Telescope Steering Column with VIP Smart Wheel

Recessed Fuel Fills with Crossover to Fill from Either Side

Anti-Lock Braking System

Diesel Exhaust Fluid (DEF) Fill on Driver's Side



## Air Conditioning & Heating

*Total Comfort Air Conditioning and Hydronic Zone Heating systems make climate control simple and effective.*

Two 13.5M Penguin Central Air Conditioners

Propane Furnace with Ducted Heat

Dash Heater and Air Conditioner

Propane Leak Detector

Wall Mounted Sensors for Heating and Air Conditioning

Driver/Passenger Overhead Dash Fans

### OPTIONS

2-15M Penguin Heat Pump Air Conditioners



## Appliances

*All of the amenities of a fine home are integrated in the Newmar design, in form and capabilities.*

30" Over the Range Microwave Oven with Black Panel Front

Three-burner Cooktop with Oven Door

Norcold® 10 Cu. Ft. Refrigerator

10 gal. Gas/Electric Water Heater with Direct-Spark Ignition

Prep for Two-Piece Washer/Dryer

### OPTIONS

Norcold® 12 Cf. Four-Door Refrigerator with Icemaker

Maytag Residential Refrigerator with Icemaker and Water Dispenser, includes 2000 Watt Inverter with Six 6-Vot Batteries

GE® 19.5 Cf. Refrigerator, 2000 Watt Inverter with Six-6 Volt Batteries

30" Convection Microwave Oven with Three Burner Cooktop

Whirlpool® Two Piece Stacked Washer & Dryer

Air Horns

Fireplace in Living Area\*



## Audio, Video & Accessories

*Stay entertained on the road and off, with spectacular visual and sound options from industry leaders.*

LED TV and DVD Player in Living and Bedroom Areas, TV Sizes Vary per Floorplan\*

AM/FM Dash Radio with CD Player and Bluetooth™

Rearview Color Monitor System with Audio

Side View Cameras Displayed Onto Rear View Monitor Screen

Winegard Digital TV Antenna

Video Selector Switch

Satellite Prep on Roof

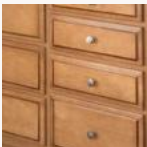
### OPTIONS

32" LCD TV in Front Overhead

Winegard Automatic Satellite without Receiver

Sony® Surround Sound System with Sub-Woofer

High Definition Component Wiring with Blu-Ray DVD Player



## Cabinets & Furniture

*Amish craftsmanship and elegance in design meld the wood cabinetry and furniture seamlessly with the Newmar interior.*

Empire Maple Mitered Designer Glazed Cabinet Doors

Concealed Hinges on Cabinet Doors

Drawers with Full Extension Guides

Fixed Pantry Shelves

Polished Solid Surface Countertop in Kitchen with Stainless Steel Sink and Flush Sink Covers

Laminate Countertop with Solid Surface Edge on Nightstands and Chest of Drawers

Flexsteel® Delux Leather Sofa and Driver/Passenger Seats

Smooth-Top Mattress

Lifts on Bed Top

Front Seats with 6 Way Power

Passenger Seat Work Station

Power Incline Retracting Bed Base with Sleep Number® Premier Air Mattress on 3636 Floorplan\*

### OPTIONS

Sienna Maple Mitered Designer Glazed Cabinet Doors

Bisque Maple Mitered Designer Glazed Cabinet Doors

Plush Pillow Top Mattress

Hide-A-Bed Sofa with Air Mattress

Sleep Number Deluxe® Air Mattress

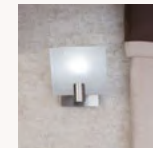
Sleep Number Premier® Air Mattress

Extenda L Sofa on Off Door Side

Fold and Tumble Sofa with Air Mattress Off Door Side

Power Incline Retracting Bed Base, Sleep Number® Deluxe Air Mattress

Power Incline Head of Bed with Sleep Number® Premier Air Mattress



## Electrical Features

*A Newmar coach's electrical and lighting system is designed for maximum reliability, functionality, and style.*

6.0 kW Cummins Onan® Diesel Quiet Series Generator

50 Amp Electrical Service with Flexible Cord and Automatic Transfer Switch

Four 12-Volt House Batteries on Pullout Tray

Battery Disconnect Switch for House Battery

110 Volt Exterior Receptacle

1200 Watt Inverter

Emergency Engine Start Switch

Exterior Security Light on Doorside

Midship Side Turn Signals



LED Lights Recessed in Ceiling, Overhead Cabinets, Vanity, and Wall Scones

---

Manually Operated Hold-To-Run Slideout Switch

---

12 Volt Auxiliary Receptacle on Dashboard

---

Recept with Built in USB Charger at Dinette and Bedroom Dresser Cabinet

---

Engine Block Heater

---

Cable TV Connection

---

Lights in Exterior Storage Compartments

---

Interior Courtesy Lights

---

#### OPTIONS

8.0 Kw Onan® Diesel Quite Series Generator

---



### Exterior Features

*The Full-Paint Masterpiece Finish is one of the most beautiful and durable in the industry.*

Full-Paint Masterpiece Finish™ with Diamond Shield Protection on Front Cap

---

Convex Exterior Mirrors with Remote Control and Defrost

---

Entrance Door with Automatic Step

---

Lighted Exterior Storage Compartments with Cargo Liner

---

Assist Handle at Entrance Door

---

Mud Flaps

---

Rear Ladder

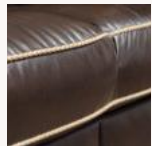
---

Rear Hitch for Towing Car

---

Undercoating

---



### Interior Features

*Flooring – both tile and carpet – is installed with Newmar's own in-house process, ensuring the best in quality and longevity, as well as the finest fit.*

Dash Panel Color Coordinated ABS

---

Front Entrance Door with Power Stepwell Cover

---

Interior Assist Handle at Main Entry Door

---

Inlaid Six Panel Design Interior Passage Doors

---

Decorative Wall Art

---

Padded Vinyl Ceiling

---

Day/Night Pleated Window Shades & Lambrequins

---

Mini Blinds in Kitchen and Bathroom Windows

---

Vinyl Tile Floor in Kitchen, Bathroom and Living Area

---

Carpeting in Bedroom and on Slideout Floors

---

MCD Power Shades at Windshield and Manual Shades on Driver/Passenger Side Windows

---

Quilted Bedspread with Bed Scarf and Accent Pillow

---

10 Bc Fire Extinguisher, Smoke Detector and Carbon Monoxide Detector

---

#### OPTIONS

Vinyl Floor Extended into Bedroom Area

---

MCD Window Shades

---



### Plumbing & Bath Features

*The Demand Water System's residential flow response ensures that the comfort and reliability of home are never far away.*

Demand Water System

---

Sewage Holding-Tank Rinse

---

Water Heater Bypass System

---

Dometic Traveler China Bowl Stool or Macerator Stool\*

---

Systems Monitor Panel

---

Fiberglass Shower with Glass Door

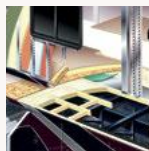
---

Exterior Shower

---

Water Filter for Entire Unit

---



### Construction Features

*From the chassis on up, Newmar coaches are built to be dependable, durable, comfortable, and beautiful.*

BriteTEK™ Roof with Walkable Decking

---

Gelcoated Fiberglass Exterior Sidewalls, Front and Rear Caps

---

Aluminum-Frame Sidewalls & Roof Construction, 16" on Center

---

5/8" Foam Insulation Laminated in Sidewalls & Ceiling

---

#### OPTIONS

One Piece Molded Fiberglass Roof

---



### Windows, Awnings & Vents

*Experience as much – or as little – of the outdoors as you want in comfort and style.*

One Piece Tinted Windshield

---

Frameless Single-Pane Tinted Safety-Glass Windows

---

Power Vent in Kitchen and Bathroom

---

Skylight Above Shower

---

Carefree Traveler Power Side and Entrance Door awning with Alumaguard

---

Slideout Awning Covers

---

#### OPTIONS

Frameless Double Pane Tinted Safety Glass Windows\*

---

Fantastic® Vent with Rain Sensor in Kitchen and Bathroom

---

\*Check With Dealership On Floorplan Availability

---

## YOUR LIFE. YOUR ROAD. YOUR WAY.

THE 2015 VENTANA IS YOUR ON-RAMP to the kind of comfort and convenience that only a Newmar diesel coach can deliver. All the power you could ever need is at your beck and call, thanks to the 400HP Cummins® ISL engine in selected models.\* The ride is always a smooth one with the exceptional handling that's a signature of the Ventana's Freightliner Custom Chassis. And Newmar's exclusive Comfort Drive™ Steering makes it

an easy-going journey, regardless of who's in the driver seat. There's even an accessibility minded floorplan, complete with wheelchair lift. Ventana's stunning graphics treatment, protected by our renowned Full-Paint Masterpiece™ Finish, signals to all that compromise is not part of your character. But that goes without saying when you own a Newmar.





2015

# VENTANA

DIESEL MOTOR COACH



PHANTOM DÉCOR STYLE AND VERONA GLAZED MAPLE CABINETRY - FLOORPLAN 4003

---

## WHERE CRAFTSMANSHIP MEETS COMFORT

Ventana's interior speaks volumes about the best ways to combine spacious comfort and smart design. Fresh styling complements the all-new sleeper sofa and lounge, making this leather-look ensemble even more plush. And giving you the perfect vantage to admire touches such as elegant metal weave artwork and graceful lighting sconces.

Speaking of tasty extras, the Ventana kitchen serves up plenty. Like an expandable four-person dinette and a preparation area with stainless steel sink, a solid surface mosaic backsplash and residential-quality appliances throughout.





You'll rest easy in the 2015 Ventana. Newmar makes sure your master bedroom offers everything, from handsome hardwood furnishings to immense entertainment options.

Spread out on the king size bed and enjoy the 32" Sony® HDTV system, designed to thrill with Blu-Ray DVD capability.\* Clever storage above the bed keeps things tidy, and a mini-wardrobe offers even more room for stowing your essentials.

**SONY®**

---

## LUXURY THAT'S TRULY LIVABLE

With Newmar, you don't have to settle for the good life. Not when you can enjoy the great life. All the comforts of home are along for the ride with Ventana. Such as a master bath with hardwood cabinetry and solid surface counters, as well as a spacious shower enclosure with residential quality fixtures.

Delivering the leisure and luxury you've come to expect from Newmar, Ventana is designed to please. And crafted to astound.

- King bed with quilted bedspread and accent pillow
- Deluxe carpeting in living room and bedroom
- Central vacuum system with basement outlet\*
- Sentrel™ Acrylic Shower Walls with Glass Door\*

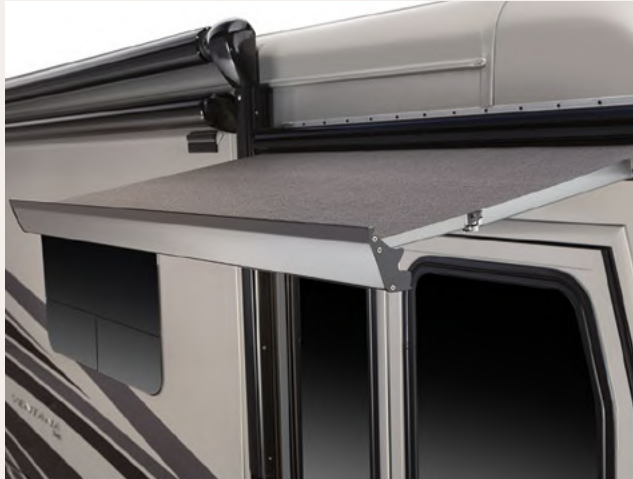
\*Optional





STEALTH EXTERIOR - FLOORPLAN 4003





---

## EVERY DETAIL MAKES A STATEMENT

With a sleeker look thanks to new frameless windows, the 2015 Ventana makes a statement of high-end authority, aided immeasurably by additions such as new exterior graphic treatments, Carefree power awnings and automatic LED lighting throughout the storage area.

- Full-Paint Masterpiece™ Finish with front protective film
- Comfort Drive™ steering with adjustable control
- Freightliner® Custom Chassis with 400HP Cummins ISB Engine on 40' and 43' floor plans
- 8.0 kW Cummins Onan® Diesel Quiet Series Generator



Driven By You



Comfort Drive™  
STEERING

## EXTERIOR DECOR



STEALTH EXTERIOR

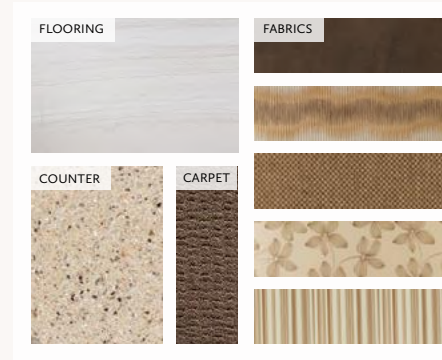


CHIANTI EXTERIOR



CASTILE EXTERIOR

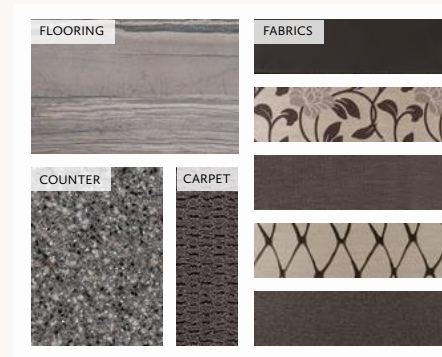
## INTERIOR DECOR



CHATEAUX INTERIOR



BORDEAUX INTERIOR



PHANTOM INTERIOR

## WOOD OPTIONS



BISQUE GLAZED MAPLE

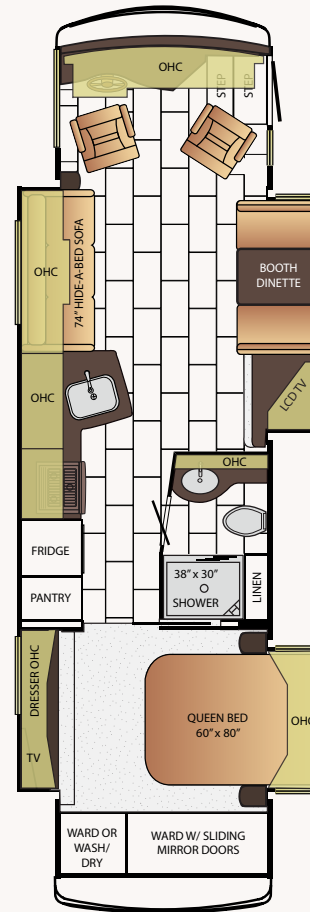


SIENNA GLAZED MAPLE



EMPIRE GLAZED MAPLE

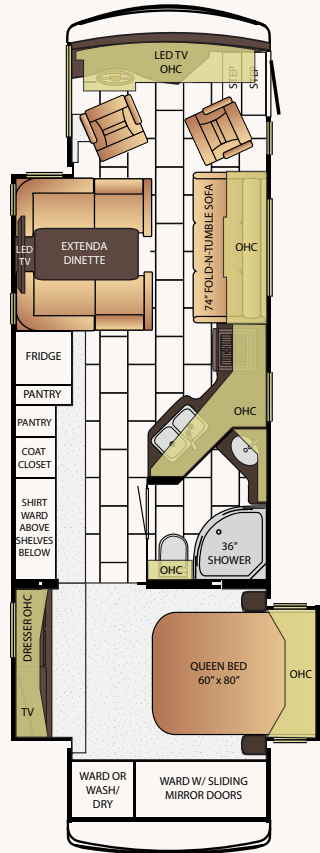
## VENTANA FLOOR PLANS



### 3436

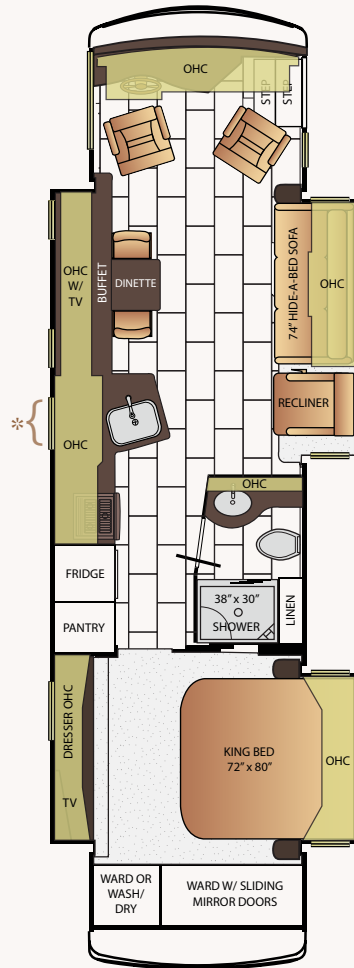
App. Overall Length	34'10"
Width	101.5"
App. Overall Height	12'5"
Interior Width	95.5"
Interior Height	84"
Grey Tank	65 gal.
Sewage Tank	45 gal.
Water Tank	105 gal.
Propane Tank	32 gal.
Furnace	35,000 btu

# VENTANA FLOOR PLANS



## 3437

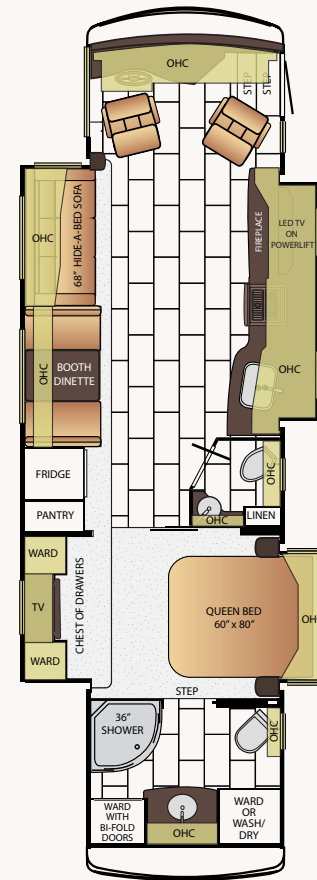
App. Overall Length	34'10"
Width	101.5"
App. Overall Height	12'5"
Interior Width	95.5"
Interior Height	84"
Grey Tank	65 gal.
Sewage Tank	45 gal.
Water Tank	105 gal.
Propane Tank	32 gal.
Furnace	35,000 btu



## 3635

App. Overall Length	36'8"
Width	101.5"
App. Overall Height	12'5"
Interior Width	95.5"
Interior Height	84"
Grey Tank	65 gal.
Sewage Tank	45 gal.
Water Tank	105 gal.
Propane Tank	32 gal.
Furnace	35,000 btu

\*Optional Window

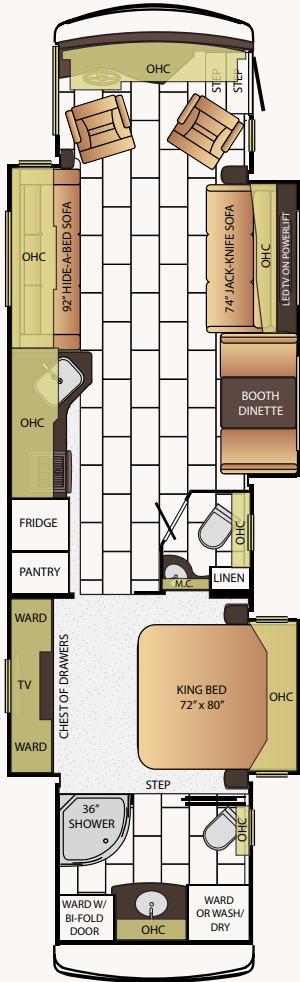


## 3636

App. Overall Length	36'8"
Width	101.5"
App. Overall Height	12'5"
Interior Width	95.5"
Interior Height	84"
Grey Tank	65 gal.
Sewage Tank	45 gal.
Water Tank	105 gal.
Propane Tank	32 gal.
Furnace	54,000 btu

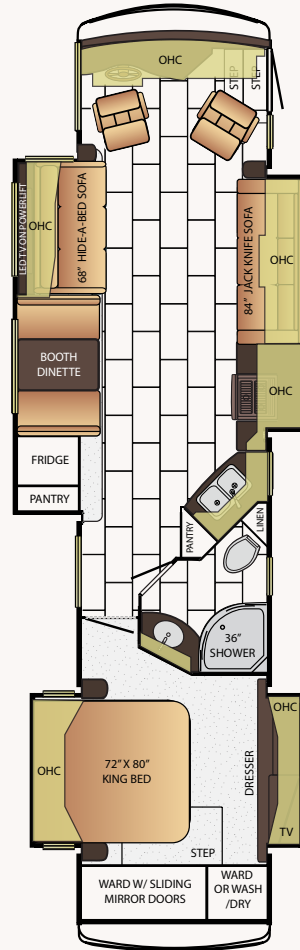
\*Optional Window

# VENTANA FLOOR PLANS



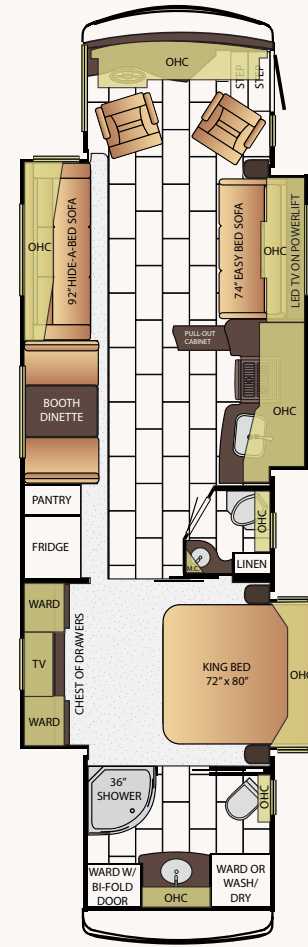
## 4002

App. Overall Length	40'10"
Width	101.5"
App. Overall Height	12'8"
Interior Width	95.5"
Interior Height	84"
Grey Tank	65 gal.
Sewage Tank	45 gal.
Water Tank	105 gal.
Propane Tank	32 gal.
Furnace	54,000 btu



## 4003

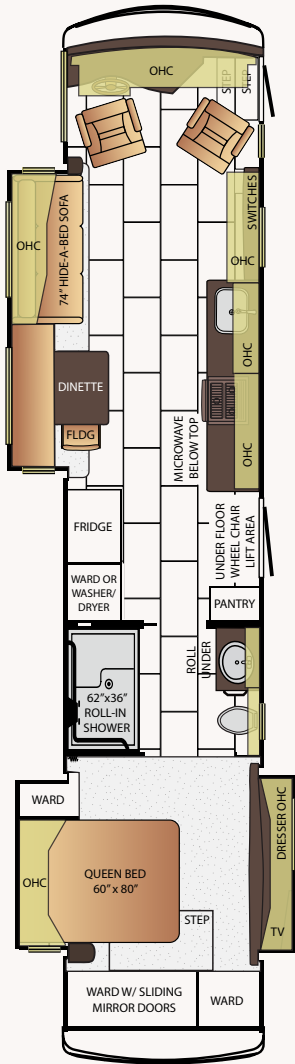
App. Overall Length	40'10"
Width	101.5"
App. Overall Height	12'8"
Interior Width	95.5"
Interior Height	84"
Grey Tank	65 gal.
Sewage Tank	45 gal.
Water Tank	105 gal.
Propane Tank	32 gal.
Furnace	54,000 btu



## 4037

App. Overall Length	40'10"
Width	101.5"
App. Overall Height	12'8"
Interior Width	95.5"
Interior Height	84"
Grey Tank	65 gal.
Sewage Tank	45 gal.
Water Tank	105 gal.
Propane Tank	32 gal.
Furnace	54,000 btu

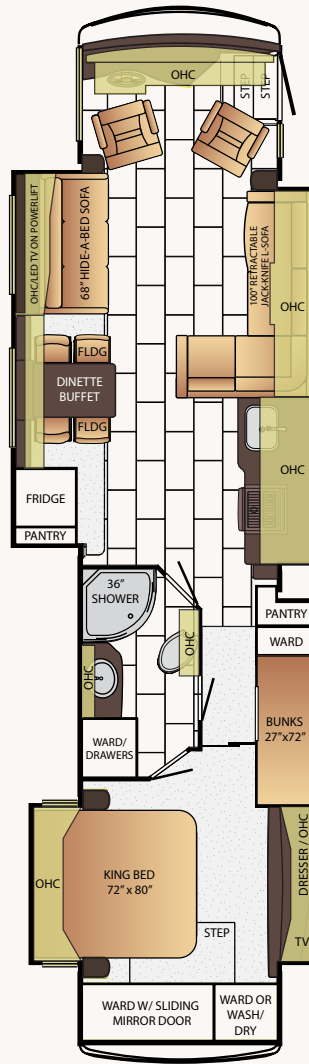
# VENTANA FLOOR PLANS



## 4311

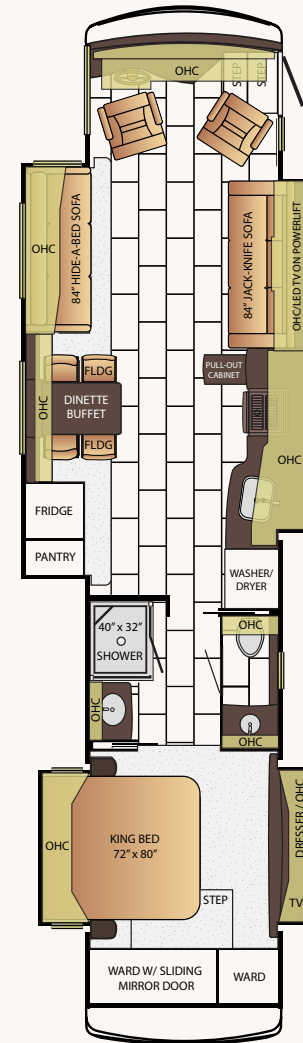
### HANDICAP ACCESSIBLE

App. Overall Length	43'10"
Width	101.5"
App. Overall Height	12'8"
Interior Width	95.5"
Interior Height	84"
Grey Tank	65 gal.
Sewage Tank	45 gal.
Water Tank	105 gal.
Propane Tank	32 gal.
Furnace	50,000 btu



## 4315

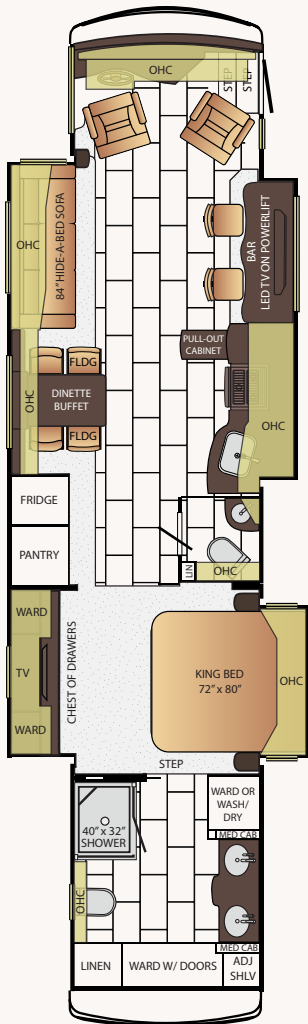
App. Overall Length	43'10"
Width	101.5"
App. Overall Height	12'8"
Interior Width	95.5"
Interior Height	84"
Grey Tank	65 gal.
Sewage Tank	45 gal.
Water Tank	105 gal.
Propane Tank	32 gal.
Furnace	50,000 btu



## 4360

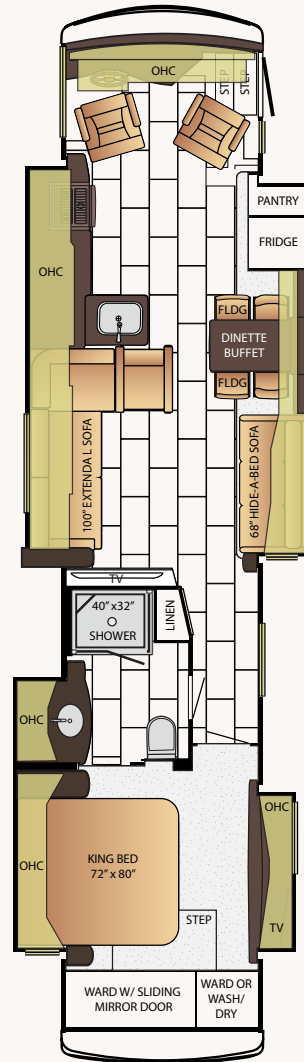
App. Overall Length	43'10"
Width	101.5"
App. Overall Height	12'8"
Interior Width	95.5"
Interior Height	84"
Grey Tank	65 gal.
Sewage Tank	45 gal.
Water Tank	105 gal.
Propane Tank	32 gal.
Furnace	50,000 btu

# VENTANA FLOOR PLANS



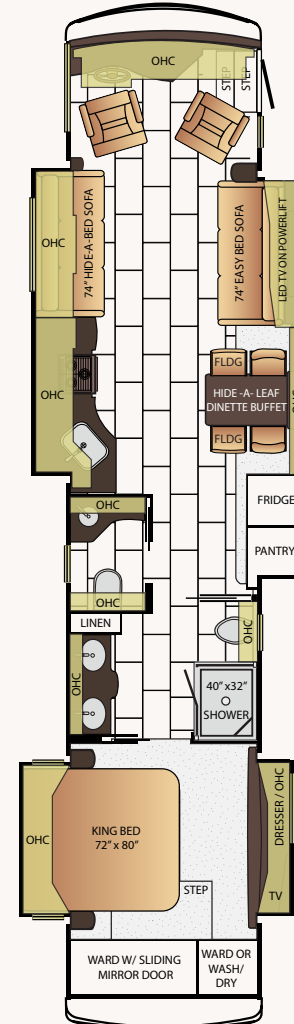
## 4369

App. Overall Length	43'10"
Width	101.5"
App. Overall Height	12'8"
Interior Width	95.5"
Interior Height	84"
Grey Tank	65 gal.
Sewage Tank	45 gal.
Water Tank	105 gal.
Propane Tank	32 gal.
Furnace	50,000 btu



## 4375

App. Overall Length	43'10"
Width	101.5"
App. Overall Height	12'8"
Interior Width	95.5"
Interior Height	84"
Grey Tank	65 gal.
Sewage Tank	45 gal.
Water Tank	105 gal.
Propane Tank	32 gal.
Furnace	50,000 btu



## 4381

App. Overall Length	43'10"
Width	101.5"
App. Overall Height	12'8"
Interior Width	95.5"
Interior Height	84"
Grey Tank	65 gal.
Sewage Tank	45 gal.
Water Tank	105 gal.
Propane Tank	32 gal.
Furnace	50,000 btu

# VENTANA FEATURES & OPTIONS



## Chassis Features

*Built specifically for Newmar with the highest quality in handling, safety, performance and dependability.*

- Diesel Exhaust Fluid (DEF) Fill on Drivers Side
- Freightliner® Tag Axle XCR Chassis with 400Hp Cummins ISL Engine on 40'-43' Floorplans
- Freightliner® XCR Chassis with 360Hp Cummins ISB Engine on 34'-36' Floorplans
- Polished Aluminum Wheels
- Hydraulic Leveling Jacks
- Comfort Drive™ Steering With Adjustable Control
- Manual Tilt and Telescope Steering Column with VIP Smart Wheel
- Recessed Fuel Fills with Crossover to Fill from Either Side
- Back-Up Alarm
- Anti-Lock Braking System



## Air Conditioning & Heating

*Total Comfort Air Conditioning and Hydronic Zone Heating systems make climate control simple and effective.*

- Two 13.5M Penguin™ Heat Pump Central Air Conditioners
- Propane Gas Furnace with Ducted Heat on 34'-40' Floorplans
- Propane Leak Detector
- Hydronic Zone Heating System on 43' Floorplans
- Driver & Passenger Dash Overhead Ventilation System
- Wall Mounted Sensors for Heating and Air Conditioning

### OPTIONS

- 2-15M Penguin Heat Pump Air Conditioners
- Hydronic Zone Diesel Heat with Continuous Hot Water
- 3-15M Penguin Heat Pump Air Conditioner and Energy Management System\*



## Appliances

*All of the amenities of a fine home are integrated in the Newmar design, in form and capabilities.*

- 30" Convection Microwave with Three Burner Gas Cooktop\*
- Three-burner Cooktop with Piezzo Ignition
- Norcold® 10 Cf. Refrigerator with Brushed Aluminum Refrigerator Front
- 10 gal. Gas/Electric Water Heater with Direct-Spark Ignition on 34'-40' Floorplans

- Prep for Two-Piece Washer/Dryer
- Fireplace in Living Area\*

### OPTIONS

- Microwave and Three Burner Gas Range with Oven
- 30" Convection Microwave in Kitchen Overhead with a Drawer Below Cooktop
- Norcold® 12 Cf. Four-Door Refrigerator with Icemaker
- Maytag® 22 Cf. Refrigerator with 2000 Watt Pure Sine Inverter and Two Extra Batteries
- Maytag® All Electric Refrigerator, 2-Burner Cooktop, Eight 6-Volt Batteries and 2800 Watt Inverter
- Maytag® 22 Cf. All Electric Refrigerator, Flush Kenyon Cooktop, Four Extra Batteries and 2800 Watt Inverter
- Maytag® 22 Cf. Refrigerator, Flush Induction Cooktop, One Extra Battery and 2800 Watt Inverter and Hydronic Heat
- Maytag® 22 Cf. Refrigerator, Flush Induction Cooktop, Four Extra Batteries and 2800 Watt Inverter
- GE® 19.5 Cf. All Electric Refrigerator, Flush Kenyon Cooktop, Four Extra Batteries, 2800 Watt Inverter and Hydronic Heat
- GE® 19.5 Cf. Refrigerator, 2000 Watt Inverter and Two Extra Batteries
- Whirlpool® Two-Piece Washer/Dryer
- Central Vacuum with Deluxe Tool Kit



## Audio, Video & Accessories

*Stay entertained on the road and off, with spectacular visual and sound options from industry leaders.*

- Sony® LED TV and DVD Player in Living and Bedroom Areas\* (TV Sizes Vary Per Floorplan)
- Sony 46" LED TV on Televator in Living Area\*
- AM/FM Dash Radio with CD Player and Bluetooth™
- Sony® Surround Sound System with Sub-Woofer
- Rearview Color Monitor System with Audio
- Side View Cameras
- Wingegard Digital TV Antenna
- Satellite Dish Prep on Roof

### OPTIONS

- Sirius Satellite Radio Capability (Does not include monthly subscription)
- Sony® 32" LED TV in Front Overhead
- Sony® 46" LED TV on Televator Behind Door Side Sofa
- Sony® 46" LED TV with Fireplace in place of Front Overhead TV\*
- Exterior Entertainment Center in Sidewall with Sony® 40" LED TV and Soundbar

- Exterior Entertainment Center in Storage Compartment with Sony® 32" LED TV, Radio, CD Player and Soundbar
- Winegard Automatic Satellite without Receiver
- In-Motion Satellite without Receiver
- High Definition Wiring with Blu-Ray DVD Player
- Dash Radio with touch Screen Navigation System



## Cabinets & Furniture

*Amish craftsmanship and elegance in design meld the wood cabinetry and furniture seamlessly with the Newmar interior.*

- Empire Maple Cabinets with Mitered Designer Glazed Doors
- Concealed Hinges on Cabinet Doors
- Polished Solid Surface Countertop in Kitchen with Under Mounted Stainless Steel Sink and Sink Covers
- Dinette with Power Adjusted Table, Bench Seat and Folding Chair on Wheelchair Accessible Floorplan\*
- Passenger Seat Work Station
- Polished Solid Surface Countertop in Bathroom, Nightstands and Chest of Drawers
- Residential Style Full Extension Ball Bearing Drawer Guides
- Flexsteel® Ultralux Leather Hide-A-Bed Sofa and Driver/Passenger Seats
- Driver/Passenger Seats with Six-Way Power, Power Lumbar, Power Footrest

### OPTIONS

- Sienna Maple Cabinets
- Bisque Maple Cabinets
- Queen Bed
- Sleep Number Deluxe® Air Mattress
- Verona Maple Cabinets with Raised Panel Glazed Hardwood Doors
- Manhattan Maple Cabinets with Raised Panel Glazed Hardwood Doors
- Harvest Maple Cabinets with Raised Panel Glazed Hardwood Doors
- Combination Desk with Buffet Table, Two Fixed/Two Folding Chairs
- Combination Desk/Dinette with Free Standing Hidden Leaf Table
- Combination Desk/Dinette with Buffet Table
- Combination Desk/Dinette with Roll Away Table
- Flexsteel® Ultralux Leather Euro Booth Dinette and Two Folding Chairs
- Door Side Fold & Tumble Sofa with Air Mattress\*
- Door Side Fold & Tumble Sofa, with Off Door side Two Swivel Wall hugger Recliners and End Table
- Door Side Extenda L Sofa, Off Door Side Swivel Wall Hugger Recliner, Fireplace, and Televator TV
- Power Flip Up Sofa in Bed Base with Sleep Number® Premier Air Mattress



Door side Easy Bed Sofa in Place of Bar  
Combination Desk with Buffet Dinette Table and Four Folding Chairs  
Off Door Side Two Swivel Wall Hugger Recliners with Table  
Power Incline Retracting Bed Base with Sleep Number® Premier Air Mattress  
Power Incline Head of Bed with Sleep Number® Premier Air Matress  
Extenda L Sofa on Off Door Side  
Buffet Cabinet with Free Standing Hidden Leaf Table



## Electrical Features

*A Newmar coach's electrical and lighting system is designed for maximum reliability, functionality, and style.*

8.0 kW Cummins Onan® Diesel Quiet Series Generator  
50 Amp Electrical Service with Flexible Cord with Automatic Transfer Switch  
Four 6-Volt House Batteries on Pullout Tray  
Battery Disconnect Switch for House Battery  
110 Volt Exterior Receptacle  
5 Watt Solar Panel to Charge Chassis Battery  
2000 Watt Inverter  
12 Volt Auxiliary Receptacle on Dashboard  
Emergency Engine Start Switch  
Engine Block Heater  
Midship Side Turn Signals  
LED Lights Recessed in Ceiling and Overhead Cabinets  
Accent Lights in Slideout Fascia Trim  
Interior Courtesy Lights  
Lights in Exterior Storage Compartments  
Recept with Built in USB Charger at Dinette and Bedroom  
Dresser Cabinet

### OPTIONS

Energy Management System  
Automatic Generator Start on Low Battery or Temperature Setting



## Exterior Features

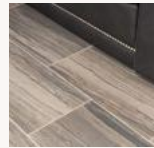
*The Full-Paint Masterpiece Finish is one of the most beautiful and durable in the industry.*

Full-Paint Masterpiece Finish™ with Diamond Shield Protection on Front Cap  
Convex Exterior Mirrors with Remote Control, Defrost and Turn Signals

Entrance Door with Automatic Step  
Lighted Exterior Storage Compartments with Cargo Liner  
Rear Hitch for Towing Car  
Rear Protective Full-width Tow Guard  
Rear Ladder  
Undercoating  
Wheelchair Lift on 4311 Floorplan

### OPTIONS

Large Chrome Exterior Mirrors  
Large Storage Tray with Access from One Side or Either Side \*



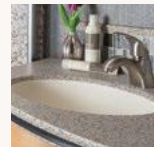
## Interior Features

*Flooring – both tile and carpet – is installed with Newmar's own in-house process, ensuring the best in quality and longevity, as well as the finest fit.*

Designer Feature Ceiling  
Day/Night Pleated Window Shades & Lambrequins  
Mini Blinds in Kitchen and Bathroom Windows  
Porcelain Tile Floor in Kitchen, Bathroom and Living Area  
Carpeting in Bedroom and on Slideout Floors  
MCD Power Shades at Windshield and Manual Shades on Driver/Passenger Side Windows  
Dash Panel Color Coordinated ABS  
Front Entrance Door with Power Stepwell Cover  
Inlaid Six Panel Design Interior Passage Doors  
Removable Transport Pads for Under Slideout Rollers

### OPTIONS

Floor Tile Extended into Bedroom Area  
Safe Located in Bedroom Wardrobe  
MCD Window Shades



## Plumbing & Bath Features

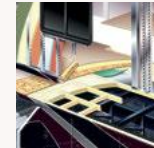
*The Demand Water Systems residential flow response ensures that the comfort and reliability of home are never far away.*

Demand Water System  
Water Heater Bypass System\*  
Dometic® Traveler China Bowl Stool or Macerator Stool\*  
Systems Monitor Panel

Sentrel™ Acrylic Shower Walls with Glass Door\*  
Exterior Shower

### OPTIONS

110 Volt Heat Pads for Holding Tanks  
Power Water Hose Reel



## Construction Features

*From the Chassis on up, Newmar coaches are built to be dependable, durable, comfortable, and beautiful.*

BriteTEK™ Roof with Walkable Decking  
Gelcoated Fiberglass Exterior Sidewalls, Front and Rear Caps  
Aluminum-Frame Sidewalls & Roof Construction, 16" on Center  
5/8" Foam Insulation Laminated in Sidewalls & Ceiling

### OPTIONS

One Piece Molded Fiberglass Roof  
Mechanical Lock Arms on Slideout Rooms  
Power Baggage Door Locks, Keyless Entrance Door with Touch Pad and Door Bell  
Polar Pak R19 Batten Insulation in Roof



## Windows, Awnings & Vents

*Experience as much – or as little – of the outdoors as you want in comfort and style.*

Frameless Double-Pane Tinted Safety-Glass Windows  
Fan-Tastic® Vent with Rain Sensor in Kitchen and Bathroom  
Carefree Traveler Power Side and Entrance Door Awning with Alumaguard  
Slideout Awning Covers  
One Piece Tinted Windshield

### OPTIONS

Kitchen Window

\*Check With Dealership On Floorplan Availability

## VENTANA CHASSIS SPECIFICATIONS

Floor Plan	Engine HP	Axle Ratio	Fuel Cap.	Wheel Base	Front GAWR*	Rear GAWR*	Tag GAWR*	GVWR*	GCWR*	App. UVW	App. NCC
3436	360	4.78	100 gal.	206"	12,000 lb.	23,000 lb.	0	35,000 lb.	45,000 lb.	26,800 lb.	8,200 lb.
3437	360	4.78	100 gal.	206"	12,000 lb.	23,000 lb.	0	35,000 lb.	45,000 lb.	26,800 lb.	8,200 lb.
3635	360	4.78	100 gal.	228"	12,400 lb.	24,000 lb.	0	36,400 lb.	46,400 lb.	26,900 lb.	9,500 lb.
3636	360	4.78	100 gal.	228"	12,400 lb.	24,000 lb.	0	36,400 lb.	46,400 lb.	26,900 lb.	9,500 lb.
4002	400	4.78	100 gal.	245+TA	14,000 lb.	20,000 lb.	10,000 lb.	44,000 lb.	54,000 lb.	32,700 lb.	11,300 lb.
4003	400	4.78	100 gal.	245+TA	14,000 lb.	20,000 lb.	10,000 lb.	44,000 lb.	54,000 lb.	32,700 lb.	11,300 lb.
4037	400	4.78	100 gal.	245+TA	14,000 lb.	20,000 lb.	10,000 lb.	44,000 lb.	54,000 lb.	32,700 lb.	11,300 lb.
4311	400	4.78	100 gal.	281+TA	14,000 lb.	20,000 lb.	10,000 lb.	44,000 lb.	54,000 lb.	33,500 lb.	10,500 lb.
4315	400	4.78	100 gal.	281+TA	14,000 lb.	20,000 lb.	10,000 lb.	44,000 lb.	54,000 lb.	33,500 lb.	10,500 lb.
4360	400	4.78	100 gal.	281+TA	14,000 lb.	20,000 lb.	10,000 lb.	44,000 lb.	54,000 lb.	33,500 lb.	10,500 lb.
4369	400	4.78	100 gal.	281+TA	14,000 lb.	20,000 lb.	10,000 lb.	44,000 lb.	54,000 lb.	33,500 lb.	10,500 lb.
4375	400	4.78	100 gal.	281+TA	14,000 lb.	20,000 lb.	10,000 lb.	44,000 lb.	54,000 lb.	33,500 lb.	10,500 lb.
4381	400	4.78	100 gal.	281+TA	14,000 lb.	20,000 lb.	10,000 lb.	44,000 lb.	54,000 lb.	33,500 lb.	10,500 lb.

## OUR PARTNERS

WHERE THE FINEST NAMES IN QUALITY AND PERFORMANCE ARE ALONG FOR THE RIDE.

To assure that you experience only the best in comfort, control and unsurpassed convenience in our incomparable family of Luxury Coaches, Newmar partners with the most prestigious names in mobile lifestyle, entertainment and technology. These brands are leaders in their fields – and legends in providing customers with new, unsurpassed levels of quality and reliability. Best in class performance from names you can trust. At Newmar, that's our difference. And our promise.





---

## TRUST

THE STRONGEST POSSIBLE FOUNDATION  
FOR A MOTOR COACH.

According to Newmar president Matthew Miller, “Customers say they’re loyal to us because they trust us to stand behind our products – from support, parts and service to paying our warranties. It feels good to own a coach that has all of that behind it.”

How do we sustain this high level of service? At Newmar, there’s a Miller way of doing things. These principles guide us every day. Courtesy. Integrity. And reliability. So when you buy from Newmar, you know that every single person who touches your coach or talks with you has your back. Period.

2015  
**VENTANA LE & VENTANA**

**NEWMAR EXPRESS LIMITED WARRANTY**

Every Ventana LE & Ventana Diesel motor coach is backed by Newmar's one-year limited warranty/unlimited miles. Ask your Newmar dealer for details.

**NEWMAR EXPRESS LIMITED WARRANTY**

If any part of your Newmar recreational vehicle superstructure (which is the steel/aluminum structure of the sidewall, roof or frame) fails to perform properly within five years from the date of purchase because of faulty workmanship or material supplied by Newmar, it will be repaired without charge for either parts or labor by Newmar. This structural warranty is available only to the original purchaser and is non-transferable.

Some features in our literature are optional. Colors and finishes are photographic representations. The actual materials may look different. Prices, specifications and floor plans are subject to change at Newmar's discretion, without prior notice or obligation. Please see your dealer for actual samples and specifications.



WHEN YOU KNOW THE DIFFERENCE <sup>SM</sup>

